



EAGLE GROUP Hand Sinks
got soap?



EAGLE
GROUP

Profit from the Eagle Advantage®

Eagle Hand Sinks

Hand-transmission is a critical factor in the spread of bacteria, pathogens and viruses which cause disease and foodborne illness. Foodborne illness kills over 10,000 people each year. Over 70% of all outbreaks originate in foodservice operations and as many as 40% are the result of poor hand washing and cross-contamination. The average incident costs the foodservice industry over \$75,000 and results in significant losses of future sales.

Eagle offers many different styles of hand sinks to help control the spread of foodborne illness.



Over 30 models including...

...Traditional:



*Includes
"the industry
standard"
– the HSA-10-F*

...Hand Sinks with Standard Towel & Soap Dispenser:



*Modeled after our
Traditional Hand Sinks,
but come standard
with C-fold towel
dispenser and
soap dispenser*

...Valve-Operated:



*Great for hospitals,
"hands free"
operation for less
contamination*

...Electronic:



*Sensor-activated faucet
conserves water;
electronic "eye" soap
dispenser minimizes
cross-contamination
between soap & water
dispenser*

...Space Savers:



*Designed for
maximum space
efficiency – only 12"
from side to side!*

HFL-5000 Handwashing System

- #HSA-10-FE-B-T-NB-MG Eagle hand sink with MICROGARD® antimicrobial protection.
- San Jamar touchless towel dispenser. Eagle part #352854. Use Tork #RB1000 towel roll #H21 system.
- T&S electronic eye faucet, splash mounted with battery and AC adapter for dual operation - with AC adapter plugged in, faucet will automatically switch to AC power and conserve battery power. Eagle part #356128.
- Purell/TFX hand sanitizing dispenser. Eagle part #352852.
- Gojo/TFX hand soap dispenser. Eagle part #352853.
- FoodHandler glove rack with single service gloves. Model #11-0012. Eagle part #352855.
- Tucel soft bristle white nail brush. Model #1832. Eagle part #348602.



Optional MICROGARD® for Hand Sinks

- MICROGARD® is an antimicrobial agent which contains built-in protection to retard the growth of a broad range of bacteria, mold and mildew on the surface that cause stains, odors and degradation.
- MICROGARD® combines inorganic antimicrobial silver ions with a patented delivery system. The patented delivery system triggers the release of silver ions which react with bacteria in three ways:
 - 1) suffocates the cell,
 - 2) stops the cell reproduction system,
 - 3) stops the cell from growing.
- MICROGARD® is a second line of defense. In keeping with good hygiene practices, clean this product as usual. The protection will not wash out, while organic bactericides may.*
- Note: To clean, use mild soap and water, rinse, and wipe entire surface dry. Soft non-abrasive cleaners may be used when necessary. Strong abrasive cleaners will scratch and dull the surface.
- MICROGARD® is applied onto top and underside of sink deck, backsplash, and inside & outside of sink bowl (excludes faucets, drains, towel/soap dispensers, waste receptacle, skirt, pedal valves, and nail brush holder).

To order MICROGARD® on Hand Sinks:

Add suffix "-MG" to model number.

Example: HSA-10-F-MG

* MICROGARD® does not protect users or others against bacteria, viruses, germs or other disease organisms. Always clean this product thoroughly after each use.

Traditional Hand Sinks

These units are wall mounted and come with basket drain or lever drain, and “Z” wall mount bracket. Basket drain and lever drain come with crumb cup. Most of these units have accessories as standard components.



HSA-10*
Basic hand sink

Comes standard with:

- Holes punched 4” apart for splash mount faucet (not included)
- 1½” Basket Drain

Bowl Size: 9¼”W x 13½”L x 6¼”D
Overall Size: 14¾”W x 18½”L x 12½”H



HSA-10-F*
The industry standard

Comes standard with:

- Splash Mount Gooseneck Faucet
- 1½” Basket Drain

Bowl Size: 9¼”W x 13½”L x 6¼”D
Overall Size: 14¾”W x 18½”L x 12½”H



HSA-10-FA*

Comes standard with:

- Splash Mount Gooseneck Faucet
- P-trap and Tail Piece
- 1½” Basket Drain

Bowl Size: 9¼”W x 13½”L x 6¼”D
Overall Size: 14¾”W x 18½”L x 12½”H

**W = front to back; L = side to side; D = depth of sink bowl;
H = top of backsplash to bottom of sink bowl**



HSA-10-FAW*

Comes standard with:

- Splash Mount Gooseneck Faucet with Wrist Handles
- P-trap and Tail Piece
- 1½” Basket Drain

Bowl Size: 9¼”W x 13½”L x 6¼”D
Overall Size: 14¾”W x 18½”L x 12½”H



HSA-10-FL

Comes standard with:

- Splash Mount Gooseneck Faucet
- 1½” Polymer Lever Drain

Bowl Size: 10”W x 14”L x 5”D
Overall Size: 14¾”W x 18½”L x 12½”H



HSA-10-FO

Comes standard with:

- Splash Mount Gooseneck Faucet
- 1½” Polymer Lever Drain
- Overflow

Bowl Size: 10”W x 14”L x 5”D
Overall Size: 14¾”W x 18½”L x 12½”H

*MICROGARD® available for these hand sinks. See page 2 for details.

Electronic Hand Sinks – AC Power



AC Power: Electronic “eye” sensor beam (adjustable from 3” to 12”) activates water flow. Requires 120-volt, 15-amp electric. 12-volt adapter included. All units come with #342938 Y-inlet mixing valve. For regulating water temperature, #326015 temperature adjustment valve is required. See page 10.

Note: Battery-powered sink is optional only to sinks on this page. To order faucet utilizing 6-volt battery, add suffix “-B” to sink model number. Example: HSA-10-FE-B. See page 12 for more information.

All units except #HSA-10-FA-PE come with “Z” wall mount bracket. All drains come with crumb cup.



HSA-10-FE*

Comes standard with:

- Splash Mount Gooseneck Spout
- Electric Eye/Sensor Beam Operation
- 1½” Basket Drain

Bowl Size: 9¼”W x 13½”L x 6¼”D
Overall Size: 14¼”W x 18½”L x 12½”H



HSA-10-FOE

Comes standard with:

- Splash Mount Gooseneck Spout
- Electric Eye/Sensor Beam Operation
- 1½” Polymer Lever Drain
- Overflow

Bowl Size: 10”W x 14”L x 5”D
Overall Size: 14¼”W x 18½”L x 12½”H



HSA-10-FA-PE*

Comes standard with:

- Splash Mount Gooseneck Spout
- Electric Eye/Sensor Beam Operation
- Soap Dispenser
- P-Trap and Tail Piece
- 1½” Basket Drain

Bowl Size: 9¼”W x 13½”L x 6¼”D
Overall Size: 14¼”W x 18½”L x 40¼”H

W = front to back; L = side to side; D = depth of sink bowl;
H = top of backsplash to bottom of sink bowl or pedestal



HSA-10-FDPE*

Comes standard with:

- Splash Mount Gooseneck Spout
- Electric Eye/Sensor Beam Operation
- C-Fold Towel Dispenser
- Soap Dispenser
- 1½” Basket Drain

For optional waste receptacle, see page 10.

Bowl Size: 9¼”W x 13½”L x 6¼”D
Overall Size: 14¼”W x 19¼”L x 28¼”H



HSA-10-FODPE

Comes standard with:

- Splash Mount Gooseneck Spout
- Electric Eye/Sensor Beam Operation
- C-Fold Towel Dispenser
- Soap Dispenser
- 1½” Polymer Lever Drain
- Overflow

Bowl Size: 10”W x 14”L x 5”D
Overall Size: 14¼”W x 19¼”L x 28¼”H



HSA-10-FDPEE*

Comes standard with:

- Splash Mount Gooseneck Spout
- Electric Eye/Sensor Beam Operation
- C-Fold Towel Dispenser
- Electronic Soap Dispenser (requires 4 “D” batteries)
- 1½” Basket Drain

For optional waste receptacle, see page 10.

Bowl Size: 9¼”W x 13½”L x 6¼”D
Overall Size: 14¼”W x 19¼”L x 31¼”H

*MICROGARD® available for these hand sinks. See page 2 for details.

Electronic Hand Sinks – Battery Power



These sinks feature a battery-powered electronic-eye faucet which operates on a 6-volt battery with a life of 1-3 years, depending on usage. Also features a built-in “low battery” indicator light. All units come with #342938 Y-inlet mixing valve. For regulating water temperature, #326015 temperature adjustment valve is required. See page 10.



HSA-10-FE-B-DS*

Comes standard with:

- Battery-Powered Electronic-Eye Faucet
- Deck Mount Soap Dispenser
- 1½" Basket Drain

Bowl Size: 9¼"W x 13½"L x 6¼"D

Overall Size: 14½"W x 18½"L x 12½"H

(note: overall size does not include soap dispenser globe)



HSAN-10-FE-B-DS

Comes standard with:

- Battery-Powered Electronic-Eye Faucet
- Deck Mount Soap Dispenser
- 1½" Basket Drain

Bowl Size: 13½"W x 9¼"L x 6¼"D

Overall Size: 17½"W x 12½"L x 14¼"H

(note: overall size does not include soap dispenser globe)



HSAP-14-ADA-FE-B

Comes standard with:

- Battery-Powered Electronic-Eye Faucet
- Deck Mount Soap Dispenser
- Front-Loading Towel Dispenser
- Skirt
- 1½" Basket Drain

Bowl Size: 16"W x 14"L x 5"D

Overall Size: 24"W x 22"L x 24½"H

W = front to back; L = side to side; D = depth of sink bowl;
H = top of backsplash to bottom of bowl, skirting, or waste receptacle



HSA-10-FE-B-NB-MG

Comes standard with:

- Battery-Powered Electronic-Eye Faucet
- Nail Brush and Nail Brush Holder
- Standard MICROGARD® Antimicrobial Protection
- 1½" Basket Drain

Bowl Size: 9¼"W x 13½"L x 6¼"D

Overall Size: 14½"W x 18½"L x 12½"H



U.S. Patent
#5,732,422

HSA-10-FE-B-T-NB-MG

Comes standard with:

- Battery-Powered Electronic-Eye Faucet
- Nail Brush and Nail Brush Holder
- Standard MICROGARD® Antimicrobial Protection
- Waste Receptacle & Skirt
- 1½" Basket Drain

Bowl Size: 9¼"W x 13½"L x 6¼"D

Overall Size: 14½"W x 18½"L x 29½"H



U.S. Patent
#5,732,422

HSA-10-FDPEE-B-T*

Comes standard with:

- Battery-Powered Electronic-Eye Faucet
- C-Fold Towel Dispenser
- Electronic Soap Dispenser (requires 4 size "D" batteries)
- 1½" Basket Drain
- Waste Receptacle & Skirt

Bowl Size: 9¼"W x 13½"L x 6¼"D

Overall Size: 14½"W x 19¼"L x 47½"H

*MICROGARD® available for these hand sinks. See page 2 for details.

Hand Sinks with Standard Towel and/or Soap Dispensers



These wall mounted sinks come standard with towel dispenser designed to accommodate 4" x 10" C-fold disposable paper towels; and/or 16-oz. soap dispenser. "Z" wall mount bracket, drain and faucet also included. Basket drain and lever drain standard with crumb cup.



HSA-10-FDP*

Comes standard with:

- Splash Mount
- Gooseneck Faucet
- C-Fold Towel Dispenser
- Soap Dispenser
- 1½" Basket Drain

Bowl Size: 9"W x 13½"L x 6"D
Overall Size: 14¾"W x 19¼"L x 28¾"H



HSA-10-FDPS*

Comes standard with:

- Splash Mount
- Gooseneck Faucet
- C-Fold Towel Dispenser
- Soap Dispenser
- 1½" Basket Drain
- Skirt

Bowl Size: 9"W x 13½"L x 6"D
Overall Size: 14¾"W x 19¼"L x 30"H



HSA-10-FLDP

Comes standard with:

- Splash Mount
- Gooseneck Faucet
- C-Fold Towel Dispenser
- Soap Dispenser
- 1½" Polymer Lever Drain

Bowl Size: 10"W x 14"L x 5"D
Overall Size: 14¾"W x 19¼"L x 28"H



HSA-10-FDPK

Comes standard with:

- Splash Mount
- Gooseneck Spout
- Knee Pedals
- C-Fold Towel Dispenser
- Soap Dispenser
- 1½" Basket Drain
- Skirt

Bowl Size: 9"W x 13½"L x 6"D
Overall Size: 14¾"W x 19¼"L x 33"H

W = front to back; L = side to side; D = depth of sink bowl;
H = top of backsplash to bottom of bowl or skirt



HSA-10-FODP

Comes standard with:

- Splash Mount Gooseneck Faucet
- C-Fold Towel Dispenser
- Soap Dispenser
- 1½" Polymer Lever Drain
- Overflow

Bowl Size: 10"W x 14"L x 5"D
Overall Size: 14¾"W x 19¼"L x 28"H



HSA-10-F-DS*

Comes standard with:

- Splash Mount Gooseneck Faucet
- Deck Mount Soap Dispenser
- 1½" Basket Drain

Bowl Size: 9"W x 13½"L x 6"D
Overall Size: 14¾"W x 18¾"L x 12¾"H
(note: overall size does not include soap dispenser globe)



HSAN-10-F-DS*

Comes standard with:

- Splash Mount Gooseneck Faucet
- Deck Mount Soap Dispenser
- 1½" Basket Drain

Bowl Size: 13½"W x 9"L x 6"D
Overall Size: 17¾"W x 12¾"L x 14¾"H
(note: overall size does not include soap dispenser globe)

*MICROGARD® available for these hand sinks. See page 2 for details.

Knee/Foot Valve Operated Hand Sinks



"Hands-free" operation! All units feature splash mount gooseneck spout and basket drain with crumb cup. All sinks are available with MICROGARD®. See page 2 for more information.

Knee Valve operated

All units come with "Z" wall mount bracket.

(note: overall sizes do not include knee valves)



HSA-10-1FK

Comes standard with:

- Splash Mount Gooseneck Spout
- Single Knee Pedal
- Skirt
- 1½" Basket Drain

Bowl Size: 9¼"W x 13½"L x 6¼"D
Overall Size: 14¼"W x 18½"L x 17½"H



HSA-10-FK

Comes standard with:

- Splash Mount Gooseneck Spout
- Knee Pedals
- Skirt
- 1½" Basket Drain

Bowl Size: 9¼"W x 13½"L x 6¼"D
Overall Size: 14¼"W x 18½"L x 17½"H



HSA-10-FKP

Comes standard with:

- Splash Mount Gooseneck Spout
- Single Knee Valve Plate
- Skirt
- 1½" Basket Drain

Bowl Size: 9¼"W x 13½"L x 6¼"D
Overall Size: 14¼"W x 18½"L x 17½"H

Foot Valve operated



HSA-10-FA-1P

Comes standard with:

- Splash Mount Gooseneck Spout
- Single Foot Pedal Valve
- P-Trap and Tail Piece
- 1½" Basket Drain

Bowl Size: 9¼"W x 13½"L x 6¼"D
Overall Size: 14¼"W x 18½"L x 39¼"H



HSA-10-FA-P

Comes standard with:

- Splash Mount Gooseneck Spout
- Foot Pedal Valves
- P-Trap and Tail Piece
- 1½" Basket Drain

Bowl Size: 9¼"W x 13½"L x 6¼"D
Overall Size: 14¼"W x 18½"L x 39¼"H

W = front to back; L = side to side; D = depth of sink bowl; H = top of backsplash to bottom of bowl, knee valve bracket, or pedestal

Hand Sinks with Standard Wrist Handles



Both units feature "Z" wall mount bracket and basket drain with crumb cup.

Sinks are available with MICROGARD®. See page 2 for details.



HSA-10-FW

Comes standard with:

- Splash Mount Gooseneck Faucet with Wrist Handles
- 1½" Basket Drain

Bowl Size: 9¼"W x 13½"L x 6¼"D
Overall Size: 14¼"W x 18½"L x 12¼"H



HSA-10-FAW

Comes standard with:

- Splash Mount Gooseneck Faucet with Wrist Handles
- P-trap and Tail Piece
- 1½" Basket Drain

Bowl Size: 9¼"W x 13½"L x 6¼"D
Overall Size: 14¼"W x 18½"L x 12¼"H

Hand Sink with Tubular Wall Support



Includes "Z" wall mount bracket and basket drain with crumb cup.

Available with MICROGARD®. See page 2 for details.



HSA-10-FTWS

Comes standard with:

- Splash Mount Gooseneck Faucet
- Tubular Wall Brackets
- 1½" Basket Drain

Bowl Size: 9¼"W x 13½"L x 6¼"D
Overall Size: 14¼"W x 18½"L x 12¼"H

Special Purpose Hand Sinks

All units come standard with faucet (except where noted) and basket drain with crumb cup.

Standard

Same as HSA-10-F with exception of deck mount faucet



HSAD-10-F

Comes standard with:

- Deck Mount Gooseneck Faucet
- 1½" Basket Drain

Bowl Size:

9¼"W x 13¼"L x 6¼"D

Overall Size:

16½"W x 18¾"L x 14¼"H

Economical



HSAE-10-FA

Comes standard with:

- Deck Mount Gooseneck Faucet
- Wall Brackets
- 4" High Backsplash
- 1½" Basket Drain

Bowl Size:

10"W x 14"L x 5"D

Overall Size:

15"W x 16¾"L x 9"H

Physically Challenged



HSAP-14-FW

Comes standard with:

- Deck Mount Gooseneck Faucet with Wrist Handles
- Wall Brackets
- 1½" Basket Drain

Bowl Size:

16"W x 14"L x 5"D

Overall Size:

24¼"W x 19"L x 16½"H



HSAP-14-ADA-FE-B

Comes standard with:

- Battery-Powered Electronic-Eye Faucet
- Deck Mount Soap Dispenser
- Front-Loading C-Fold Towel Dispenser
- Skirt
- 1½" Basket Drain

Bowl Size:

16"W x 14"L x 5"D

Overall Size:

24"W x 22"L x 24½"H



HSAP-14-ADA-FW

Comes standard with:

- Faucet with Wrist Handles
- Deck Mount Soap Dispenser
- Front-Loading C-Fold Towel Dispenser
- Skirt
- 1½" Basket Drain

Bowl Size:

16"W x 14"L x 5"D

Overall Size:

24"W x 22"L x 24½"H

W = front to back; L = side to side; D = depth of sink bowl;
H = top of backsplash to bottom of bowl, skirting, or waste receptacle

Space Savers

Only 12" from side to side!!



HSAN-10-F

Comes standard with:

- Splash Mount Gooseneck Faucet
- 1½" Basket Drain

Bowl Size:

13½"W x 9¼"L x 6¼"D

Overall Size:

18"W x 12"L x 14¼"H



HSAND-10-F

Comes standard with:

- Deck Mount Gooseneck Faucet
- 1½" Basket Drain

Bowl Size:

13½"W x 9¼"L x 6¼"D

Overall Size:

19"W x 12"L x 14¼"H

HSANT-FS

Comes standard with:

- Splash Mount Gooseneck Faucet
- 1½" Basket Drain
- 19"-high Backsplash
- Skirt

Bowl Size: 13½"W x 9¼"L x 6¼"D

Overall Size: 18"W x 12"L x 26½"H



8" Centerline Faucet Mounting



HSA-10-8*

Comes standard with:

- Holes punched 8" apart for splash mount faucet (not included)
- 1½" Basket Drain

Bowl Size:

9¼"W x 13¼"L x 6¼"D

Overall Size:

14¼"W x 18¾"L x 12¾"H



HSA-10-8F*

Comes standard with:

- Splash Mount Gooseneck Faucet on 8" center
- 1½" Basket Drain

Bowl Size:

9¼"W x 13¼"L x 6¼"D

Overall Size:

14¼"W x 18¾"L x 12¾"H

with Waste Receptacle



U.S. Patent
#5,732,422

HSA-10-FDP-T*

Comes standard with:

- Splash Mount Gooseneck Faucet
- Soap dispenser
- Towel Dispenser
- Waste Skirt
- Waste Receptacle
- 1½" Basket Drain

Bowl Size:

9¼"W x 13¼"L x 6¼"D

Overall Size:

14¼"W x 19¼"L x 44¼"H

*MICROGARD® available for these hand sinks. See page 2 for details.

Hand Wash Sinks

Features heavy gauge 304 Series stainless steel all-welded construction, hinged door with pull handle and magnetic catch, built-in C-fold towel dispenser, soap dispenser, faucet, and basket drain with crumb cup.

Wall-mountable Sinks



HWC-E

Comes standard with:

- 1½" Bull Nose Front Edge
- Gooseneck Faucet
- "Z" Clips
- 1½" Basket Drain

Bowl Size: 9¼"W x 11½"L x 6"D
Overall Size: 16⅞"W x 14"L x 21¼"H

Drop-In Sinks



HWP-E

Comes standard with:

- 1½" Bull Nose Front Edge
- Gooseneck Faucet
- Flange on sides and rear
- 1½" Basket Drain

Bowl Size: 9¼"W x 11½"L x 6"D
Overall Size: 17½"W x 16½"L x 17¼"H

NOTE: T&S faucet available for both style sinks. To order, replace suffix "-E" with "-T". Example: HWC-T

Lavatory Sinks with Marine Edge

All units have a marine edge and come standard with gooseneck spout faucet, soap dispenser and basket drain.

Wall mounted



W1916-FA

Bowl Size:
15¼"W x 19¼"L x 8⅞"D
Overall Size:
23"W x 24⅝"L x 16⅞"D

Wall mounted, knee valve operation



W1916

Bowl Size:
15¼"W x 19¼"L x 8⅞"D
Overall Size:
23"W x 24⅝"L x 22⅞"D

(note: overall size does not include knee pedals)

Pedestal mounted, foot pedal valve operation



P1916

Bowl Size:
15¼"W x 19¼"L x 8⅞"D
Overall Size:
23"W x 24⅝"L x 39"D

Pedestal mounted, electronic-eye operation



P1916FE

Bowl Size:
15¼"W x 19¼"L x 8⅞"D
Overall Size:
23"W x 24⅝"L x 39"D

Hand Sink Accessories/Replacements

**NEW
TANKLESS
WATER
HEATER**



hot water heater

Hot Water Heater

Includes stainless steel pedestal with removable front access panel and with notches for electrical wiring. Energy-saving tankless water heater features 120V 29A electricity and 0.5 GPM. Water is heated instantaneously when faucet is turned on. No standby heat loss.

To order, add suffix “-WH” to hand sink model number.
Example: HSA-10-FDPEE-WH.

Applicable models include: HSA-10, HSA-10-F, HSA-10-FA, HSA-10-FDP, HSA-10-FE, HSA-10-FDPE, HSA-10-FDPEE, HSA-10-FW, and HSAD-10-F



waste receptacle

Waste Receptacle



U.S. Patent #5,732,422

20 gauge type 304 stainless steel. Removable. Comes with skirt. Must be factory installed. To order, add suffix “-T” to hand sink model number.
Example: HSA-10-FDPEE-B-T.

Fits Models: HSA-10, HSA-10-F, HSA-10-FA, HSA-10-FDP, HSA-10-FE, HSA-10-FDPE, HSA-10-FDPEE, and HSA-10-FW

Drains



polymer rotary drain



crumb cup strainer

Description	Model #
polymer rotary drain fits 3.5" (89mm)-diameter holes, with crumb cup	319931
overflow assembly for lever drain #319931 (above)	319932
1.5" (38mm) drain assembly fits 2"-diameter holes	300886
mini crumb cup for 1.5" (38mm) drain	300966
s/s basket drain assembly fits 3.5" (89mm)-diameter holes, with crumb cup	300287
cast metal lever drain with overflow assembly, with 7.25" (185mm)-long lever, fits 3.5" (89mm)-diameter holes	347771

Valves

Anti-Scald Valve

Features automatic shutdown with either hot or cold water failure.

IMPORTANT: Not for use with Emergency Eye Wash Unit (back page).

Model #326696



anti-scald valve

Non-Adjustable Y-Inlet Mixing Valve

For electronic hand sinks and hand sinks with single pedal valve only. “Y” shaped single-piece component. Chrome-plated brass body.

Model #342938



Y-inlet mixing valve

Anti-Scald Valve for Emergency Eye Wash Unit

This is the only anti-scald valve to be used with Emergency Eye Wash Unit (back page). Meets ANZI Z358.1 standards. 65°-95°F, 1/2" NPT.

Model #373848



Temperature Adjustment Valve

Features check valve to prevent backflow. For hand sinks with AC-powered electronic faucets and hand sinks with single foot or knee valves.

Model #326015



temperature adjustment valve

Plumbing

Tail Piece

Nickel-plated brass.

Model #300791



tail piece

P-Trap

Nickel-plated brass.

Model #300789



p-trap

Hand Sink Accessories/Replacements

Stainless Steel Hand Sink End Splashes

Factory-installed

To order, add to hand sink model numbers the following suffixes:

Left end splash only: **-LS**

Right end splash only: **-RS**

Left and right end splash: **-LRS**

(Note: will not work on Space Saver sinks with wrist handles. MICROGARD® cannot be applied to hand sinks with end splashes.)

For Field-installation: Model #HSA-SSK

Self-adhesive splash can be used for right or left application.



hand sink with optional end splashes

Stainless Steel Skirt Assemblies

Model #606215

Fits all HSA hand sinks with rounded bowls except Space Saver models and HSAD-10-F.

Model #607560

Fits #HSAN-10-F and HSAND-10-FS hand sinks.



skirt assembly

Stainless Steel Wall Brackets

Side mounting, one pair; does not fit space-saver models

Model #606396



wall bracket

Pedal Valves

Foot Pedal Valves

Floor mount.



double foot pedal

Model #300604



single foot pedal

Model #355994

Knee Pedal Valve



double knee pedal

Model #313481



single knee pedal

Model #351738

Nail Brush and Nail Brush Holder

Description

infectious-control nail brush made of FDA-approved material, splash-mount stainless steel nail brush holder

Model

add suffix
"-NB"

Nail Brush

Nail Brush Holder



Dispensers

Towel/Soap Dispensers

Fits all HSA hand sinks except Space Savers.

Model #DP-10

Comes with conventional soap dispenser.



model #DP-10

Model #DP-20

Comes with electronic-eye soap dispenser. Requires 4 size "D" batteries.



model #DP-20

Soap Dispensers

Conventional

Holds 16 ounces

Model #300602



Deck Mount

4" spout, 16-oz. underside globe.

Model #324074

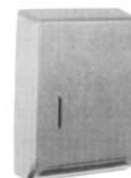


Wall Mounted with Electronic Eye

Model #359752



Towel Dispenser



Wall mounted.

Model #318496

Counter Drop-In Self Rim Design Hand Sinks

These countertop-mounted sinks are heavy gauge 304 Series stainless steel and come standard with mounting hardware, faucet, and basket drain with crumb cup.

One-compartment



SR10-14-5-1

- Comes standard with:
- Gooseneck Faucet
 - Mounting Hardware
 - 1½" Basket Drain

Bowl Size: 14"W x 10"L x 5"D
Overall Size: 19"W x 12¾"L



SR10-14-9.5-1

- Comes standard with:
- Gooseneck Faucet
 - Mounting Hardware
 - 1½" Basket Drain

Bowl Size: 14"W x 10"L x 9½"D
Overall Size: 18¾"W x 12¾"L



SR14-10-5-1

- Comes standard with:
- Gooseneck Faucet
 - Mounting Hardware
 - 1½" Basket Drain

Bowl Size: 10"W x 14"L x 5"D
Overall Size: 15"W x 16¾"L



SRU14-10-5-1

- Comes standard with:
- Gooseneck Faucet
 - Mounting Hardware
 - 1½" Basket Drain
 - Upturn on Rear and Sides

Bowl Size: 10"W x 14"L x 5"D
Overall Size: 15"W x 16¾"L

Other One-Compartment Models:

Description	Overall Length	Model #
10"W x 14"L x 9½"D bowl	16¾"	SR14-10-9.5-1
14"W x 12"L x 9½"D bowl	14¾"	SR12-14-9.5-1
12"W x 14"L x 9½"D bowl	16¾"	SR14-12-9.5-1
16"W x 14"L x 9½"D bowl	16¾"	SR14-16-9.5-1
14"W x 16"L x 9½"D bowl	18¾"	SR16-14-9.5-1
20"W x 16"L x 13½"D bowl	18½"	SR16-19-8-1
20"W x 16"L x 13½"D bowl	18½"	SR16-19-13.5-1
16"W x 20"L x 8"D bowl	22½"	SR19-16-8-1
16"W x 20"L x 13½"D bowl	22½"	SR19-16-13.5-1
24"W x 18"L x 13½"D bowl	20½"	SR18-24-13.5-1
12"W x 20"L x 6"D bowl	22½"	SR20-12-6.5-1
22"W x 22"L x 13½"D bowl	24¾"	SR22-22-13.5-1
18"W x 24"L x 13½"D bowl	26½"	SR24-18-13.5-1
24"W x 24"L x 13½"D bowl	26½"	SR24-24-13.5-1

W = front to back; L = side to side; D = depth of sink bowl; H = top (excluding faucet) to bottom of sink bowl

Two-compartment



SR10-14-9.5-2

- Comes standard with:
- Swivel Faucet
 - Mounting Hardware
 - 1½" Basket Drain

Bowl Size: 14"W x 10"L x 9½"D
Overall Size: 18¾"W x 24¾"L

Other Two-Compartment Models:

Description	Overall Length	Model #
14"W x 12"L x 9½"D bowl	28¾"	SR12-14-9.5-2
16"W x 14"L x 9½"D bowl	32¾"	SR14-16-9.5-2
20"W x 16"L x 8"D bowl	36¼"	SR16-19-8-2
20"W x 16"L x 13½"D bowl	36¼"	SR16-19-13.5-2
24"W x 18"L x 13½"D bowl	40¼"	SR18-24-13.5-2
22"W x 22"L x 13½"D bowl	48¾"	SR22-22-13.5-2
24"W x 24"L x 13½"D bowl	52½"	SR24-24-13.5-2

Three-compartment



SR10-14-9.5-3

- Comes standard with:
- Swivel Faucet
 - Mounting Hardware
 - 1½" Basket Drain

Bowl Size: 14"W x 10"L x 9½"D
Overall Size: 18¾"W x 36¾"L

Other Three-Compartment Models:

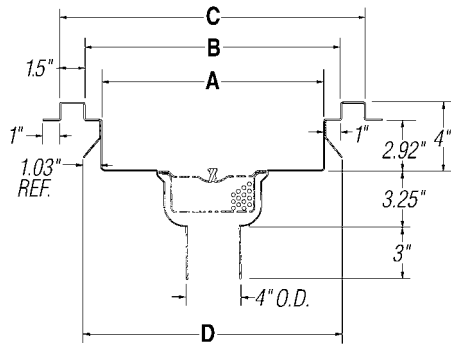
Description	Overall Length	Model #
14"W x 12"L x 9½"D bowl	42¾"	SR12-14-9.5-3
16"W x 14"L x 9½"D bowl	48¾"	SR14-16-9.5-3
20"W x 16"L x 8"D bowl	54"	SR16-19-8-3
19"W x 16"L x 13½"D bowl	54"	SR16-19-13.5-3
24"W x 18"L x 13½"D bowl	60"	SR18-24-13.5-3

Floor Troughs

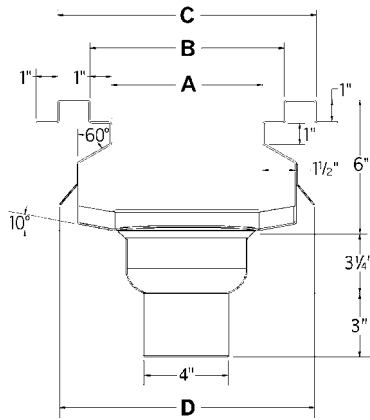
A wide variety of uses: drain off at kettles, indirect waste drainage at walk-in boxes, or indirect waste drainage for sinks. 14 gauge type 304 stainless steel construction. Built-in pitch towards drain insures complete drainage. Floor troughs and floor drains come with subway-style stainless steel grating or fiberglass grating. Troughs and drains feature coved corners and removable perforated stainless steel basket, and accommodate up to a 4"-diameter waste pipe. Secured with anchor straps. Custom sizes available.

Anti-splash floor troughs available. "Anti-splash" design assures complete drainage while preventing splashing back onto the floor. Secured with anchor straps. Custom sizes available. To order, add suffix "AS" to model number.

Example: **ASFT-1524-SG**



standard floor trough—end view



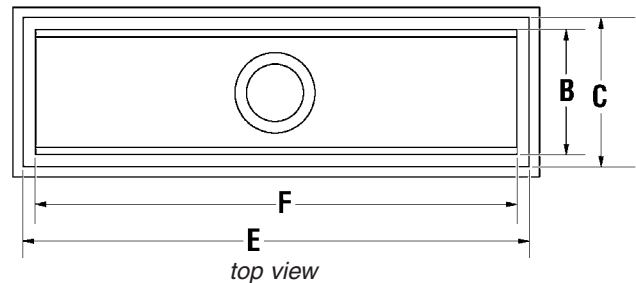
anti-splash floor trough—end view



standard floor trough with yellow fiberglass grating



anti-splash floor trough with subway-style grating



top view

(see chart below for dimensions A through F)

		12" (305mm)-Wide Troughs		15" (381mm)-Wide Troughs		18" (457mm)-Wide Troughs		24" (610mm)-Wide Troughs	
		dimension A: 7" dimension B: 9" dimension C: 12" dimension D: 9.25"*		dimension A: 10" dimension B: 12" dimension C: 15" dimension D: 12.25"*		dimension A: 13" dimension B: 15" dimension C: 18" dimension D: 15.25"*		dimension A: 19" dimension B: 21" dimension C: 24" dimension D: 21.25"*	
dimension E	dimension F	WITH YELLOW** FIBERGLASS GRATING	WITH STAINLESS GRATING	WITH YELLOW** FIBERGLASS GRATING	WITH STAINLESS GRATING	WITH YELLOW** FIBERGLASS GRATING	WITH STAINLESS GRATING	WITH YELLOW** FIBERGLASS GRATING	WITH STAINLESS GRATING
18"	15"	FT-1218-FG	FT-1218-SG	n/a	n/a	n/a	n/a	n/a	n/a
24"	21"	FT-1224-FG	FT-1224-SG	FT-1524-FG	FT-1524-SG	FT-1824-FG	FT-1824-SG	FT-2424-FG	FT-2424-SG
30"	27"	FT-1230-FG	FT-1230-SG	FT-1530-FG	FT-1530-SG	FT-1830-FG	FT-1830-SG	FT-2430-FG	FT-2430-SG
36"	33"	FT-1236-FG	FT-1236-SG	FT-1536-FG	FT-1536-SG	FT-1836-FG	FT-1836-SG	FT-2436-FG	FT-2436-SG
48"	45"	FT-1248-FG	FT-1248-SG	FT-1548-FG	FT-1548-SG	FT-1848-FG	FT-1848-SG	FT-2448-FG	FT-2448-SG
60"	57"	FT-1260-FG	FT-1260-SG	FT-1560-FG	FT-1560-SG	FT-1860-FG	FT-1860-SG	FT-2460-FG	FT-2460-SG
72"	69"	FT-1272-FG	FT-1272-SG	FT-1572-FG	FT-1572-SG	FT-1872-FG	FT-1872-SG	FT-2472-FG	FT-2472-SG
84"	81"	FT-1284-FG	FT-1284-SG	FT-1584-FG	FT-1584-SG	FT-1884-FG	FT-1884-SG	FT-2484-FG	FT-2484-SG
96"	93"	FT-1296-FG	FT-1296-SG	FT-1596-FG	FT-1596-SG	FT-1896-FG	FT-1896-SG	FT-2496-FG	FT-2496-SG
120"	117"	FT-12120-FG	FT-12120-SG	FT-15120-FG	FT-15120-SG	FT-18120-FG	FT-18120-SG	FT-24120-FG	FT-24120-SG

* For standard Floor Troughs. For "dimension D" of Anti-splash Floor Troughs, add 2".

** To order Floor Trough with Gray Fiberglass Grating, add suffix "G". Example: FT1224-FGG

To order Floor Trough with Gray ADA-approved wide "T" Bar Fiberglass Grating, add suffix "-ADA". Example: FT1224-FG-ADA (available for fiberglass grating only)

Spec-Master® FN Series Sinks



Deep-drawn seamless coved-corner sink bowls. 14 gauge type 304 stainless steel bowls, drainboards, and backsplash. Stainless steel legs, feet, and gussets. Adjustable crossbracing front-to-back and side-to-side for extra stability. 9½" backsplash. 14" water level standard. 30" and 36" drainboards available upon request.



three-compartment Spec-Master® sink with double drainboards (faucets not included)

One-Compartment Sinks

Description	Overall Length	Model #	Overall Length	Model #
20"W x 16"L bowl - no drainboards	21"	FN2016-1-14/3	39"	FN2032-2-14/3
20"W x 16"L bowl - 18" right or left drainboard	37½"	FN2016-1-18R or L-14/3	55½"	FN2032-2-18R or L-14/3
20"W x 16"L bowl - two 18" drainboards	54"	FN2016-1-18-14/3	72"	FN2032-2-18-14/3
20"W x 16"L bowl - 24" right or left drainboard	43½"	FN2016-1-24R or L-14/3	61½"	FN2032-2-24R or L-14/3
20"W x 16"L bowl - two 24" drainboards	66"	FN2016-1-24-14/3	84"	FN2032-2-24-14/3

Two-Compartment Sinks

Three-Compartment Sinks

Description	Overall Length	Model #	Overall Length	Model #
20"W x 16"L bowl - no drainboards	57"	FN2048-3-14/3	75"	FN2064-4-14/3
20"W x 16"L bowl - 18" right or left drainboard	73½"	FN2048-3-18R or L-14/3	91½"	FN2064-4-18R or L-14/3
20"W x 16"L bowl - two 18" drainboards	90"	FN2048-3-18-14/3	108"	FN2064-4-18-14/3
20"W x 16"L bowl - 24" right or left drainboard	79½"	FN2048-3-24R or L-14/3	97½"	FN2064-4-24R or L-14/3
20"W x 16"L bowl - two 24" drainboards	102"	FN2048-3-24-14/3	120"	FN2064-4-24-14/3

Four-Compartment Sinks

Utility Sinks

All 16 gauge stainless steel. 304 and 430 series construction available. Features **NEW** euro-style edge on front, square-corner construction, 8" backsplash, 13¼" deep bowls, and adjustable bullet feet. 36" working height.

NSF-approved utility sinks available. To order, add prefix "N-" to model number. Example: N-2136-2-16/3



one-compartment utility sink



two-compartment utility sink



three-compartment utility sink



four-compartment utility sink

One-Compartment Sinks – no drainboards

Bowl Size	Overall Length	16 gauge type 430	16 gauge type 304
18"W x 18"L	19½"	1818-1-16/4	1818-1-16/3
18"W x 24"L	25½"	1824-1-16/4	1824-1-16/3
21"W x 18"L	19½"	2118-1-16/4	2118-1-16/3
21"W x 24"L	25½"	2124-1-16/4	2124-1-16/3
21"W x 36"L	37½"	2136-1-16/4	2136-1-16/3
24"W x 24"L	25½"	2424-1-16/4	2424-1-16/3
24"W x 36"L	37½"	2436-1-16/4	2436-1-16/3

Two-Compartment Sinks – no drainboards

Bowl Size	Overall Length	16 gauge type 430	16 gauge type 304
18"W x 18"L	37½"	1836-2-16/4	1836-2-16/3
18"W x 24"L	49½"	1848-2-16/4	1848-2-16/3
21"W x 18"L	37½"	2136-2-16/4	2136-2-16/3
21"W x 24"L	49½"	2148-2-16/4	2148-2-16/3
24"W x 24"L	49½"	2448-2-16/4	2448-2-16/3
24"W x 30"L	61½"	2460-2-16/4	2460-2-16/3

Three-Compartment Sinks – no drainboards

Bowl Size	Overall Length	16 gauge type 430	16 gauge type 304
18"W x 12"L	37½"	1836-3-16/4	1836-3-16/3
18"W x 16"L	49½"	1848-3-16/4	1848-3-16/3
18"W x 18"L	55½"	1854-3-16/4	1854-3-16/3
21"W x 12"L	37½"	2136-3-16/4	2136-3-16/3
21"W x 16"L	49½"	2148-3-16/4	2148-3-16/3
21"W x 18"L	55½"	2154-3-16/4	2154-3-16/3
21"W x 20"L	61½"	2160-3-16/4*	2160-3-16/3*
24"W x 16"L	49½"	2448-3-16/4	2448-3-16/3
24"W x 20"L	61½"	2460-3-16/4*	2460-3-16/3*
24"W x 24"L	73½"	2472-3-16/4*	2472-3-16/3*

Four-Compartment Sinks – no drainboards

Bowl Size	Overall Length	16 gauge type 430	16 gauge type 304
18"W x 18"L	73½"	1872-4-16/4*	1872-4-16/3*
21"W x 18"L	73½"	2172-4-16/4*	2172-4-16/3*
24"W x 18"L	73½"	2472-4-16/4*	2472-4-16/3*

* Requires two sets of faucet holes.

412, 414, and 314 Series Sinks — Deep Drawn Construction



Euro-style edging on all sinks! Deep-drawn seamless coved-corner sink bowls. Galvanized legs welded adjacent to sink bowls for maximum stability and support. Front-to-back galvanized crossbracing. 9½" backsplash. Basket-type waste drains with 1½" outlet. 44½" overall height. 30" and 36" drainboards available upon request.

412 series — All heavy gauge type 430 construction. 10½"-deep sink bowls.

414 series — 14"-deep heavy gauge type 304 sink bowls with type 430 drainboards, and backsplash.

314 series — All heavy gauge type 304 construction. 14"-deep sink bowls.



three-compartment sink
with two drainboards
(faucet not included)

euro-style
edging

One-Compartment Sinks

Description	Overall Length	412 Series	414 Series	314 Series
20"W x 16"L bowl - no drainboards	23¼"	412-16-1	414-16-1	314-16-1
20"W x 16"L bowl - 18" right or left drainboard	38¾"	412-16-1-18R or L	414-16-1-18R or L	314-16-1-18R or L
20"W x 16"L bowl - two 18" drainboards	54½"	412-16-1-18	414-16-1-18	314-16-1-18
20"W x 16"L bowl - 24" right or left drainboard	44¾"	412-16-1-24R or L	414-16-1-24R or L	314-16-1-24R or L
20"W x 16"L bowl - two 24" drainboards	66½"	412-16-1-24	414-16-1-24	314-16-1-24
18"W x 24"L bowl - no drainboards	25½"	n/a	414-18-1	314-18-1
18"W x 24"L bowl - 18" right or left drainboard	40¾"	n/a	414-18-1-18R or L	314-18-1-18R or L
22"W x 22"L bowl - no drainboards	29½"	n/a	414-22-1	314-22-1
24"W x 24"L bowl - no drainboards	31½"	412-24-1	414-24-1	314-24-1

Two-Compartment Sinks

Description	Overall Length	412 Series	414 Series	314 Series
20"W x 16"L bowls - no drainboards	41"	412-16-2	414-16-2	314-16-2
20"W x 16"L bowl - 18" right or left drainboard	56½"	412-16-2-18R or L	414-16-2-18R or L	314-16-2-18R or L
20"W x 16"L bowls - two 18" drainboards	72¼"	412-16-2-18	414-16-2-18	314-16-2-18
20"W x 16"L bowls - 24" right or left drainboard	62½"	412-16-2-24R or L	414-16-2-24R or L	314-16-2-24R or L
20"W x 16"L bowls - two 24" drainboards	84¼"	412-16-2-24	414-16-2-24	314-16-2-24
18"W x 24"L bowls - no drainboards	45½"	n/a	414-18-2	314-18-2
18"W x 24"L bowls - 18" right or left drainboard	60¾"	n/a	414-18-2-18R or L	314-18-2-18R or L
18"W x 24"L bowls - two 18" drainboards	76"	n/a	414-18-2-18	314-18-2-18
22"W x 22"L bowls - two 24" drainboards	96½"	n/a	414-22-2-24	314-22-2-24
24"W x 24"L bowls - 24" right or left drainboard	78¾"	412-24-2-24R or L	414-24-2-24R or L	314-24-2-24R or L
24"W x 24"L bowls - two 24" drainboards	100"	412-24-2-24	414-24-2-24	314-24-2-24

Three-Compartment Sinks

Description	Overall Length	412 Series	414 Series	314 Series
20"W x 16"L bowls - no drainboards	58¾"	412-16-3	414-16-3	314-16-3
20"W x 16"L bowls - 18" right or left drainboard	74¾"	412-16-3-18R or L	414-16-3-18R or L	314-16-3-18R or L
20"W x 16"L bowls - two 18" drainboards	90"	412-16-3-18	414-16-3-18	314-16-3-18
20"W x 16"L bowls - 24" right or left drainboard	80¾"	412-16-3-24R or L	414-16-3-24R or L	314-16-3-24R or L
20"W x 16"L bowls - two 24" drainboards	102"	412-16-3-24	414-16-3-24	314-16-3-24
18"W x 24"L bowls - no drainboards	65½"	n/a	414-18-3*	314-18-3*
18"W x 24"L bowls - 18" right or left drainboard	80¾"	n/a	414-18-3-18R or L*	314-18-3-18R or L*
18"W x 24"L bowls - two 18" drainboards	96"	n/a	414-18-3-18*	314-18-3-18*
18"W x 24"L bowls - 24" right or left drainboard	86¾"	n/a	414-18-3-24R or L*	314-18-3-24R or L*
18"W x 24"L bowls - two 24" drainboards	108"	n/a	414-18-3-24*	314-18-3-24*
22"W x 22"L bowls - two 24" drainboards	120½"	n/a	414-22-3-24*	314-22-3-24*
24"W x 24"L bowls - no drainboards	83½"	412-24-3*	414-24-3*	314-24-3*
24"W x 24"L bowls - 24" right or left drainboard	104¾"	412-24-3-24R or L*	414-24-3-24R or L*	314-24-3-24R or L*
24"W x 24"L bowls - two 24" drainboards	126"	412-24-3-24*	414-24-3-24*	314-24-3-24*

Four-Compartment Sinks

Description	Overall Length	414 Series	314 Series
20"W x 16"L bowls - no drainboards	76½"	414-16-4*	314-16-4*
20"W x 16"L bowls - right or left 18" drainboard	92½"	414-16-4-18R or L*	314-16-4-18R or L*
20"W x 16"L bowls - two 18" drainboards	107¾"	414-16-4-18*	314-16-4-18*
20"W x 16"L bowls - right or left 24" drainboard	98½"	414-16-4-24R or L*	314-16-4-24R or L*
20"W x 16"L bowls - two 24" drainboards	119¼"	414-16-4-24*	314-16-4-24*

* Features two sets of faucet holes.

Hand Sink Faucets, Spouts, and Accessories

All faucets below feature 4" (102mm) centers, except where noted.



splash mount faucet
model #303987



deck mount faucet
model #302004



deck mount faucet
with 8" spout
model #301248



T&S splash mount faucet
model #306134



T&S splash mount faucet
model #313305



splash mount spout
model #312162



emergency eye wash unit
model #326272



shut-off valve
model #349921



No
Electric
Needed
splash-mount
battery-powered
electronic-eye faucet
model #326014



splash-mount T&S
electronic-eye faucet
model #356128

Standard Faucets

Description	Model #
splash mounted	303987
wrist handles for faucet #303987	307120
splash mounted with wrist handles	306495
deck mounted	302004
deck mounted, 8" (203mm) spout	301248
splash mounted, gooseneck, 8" (203mm) center	313075
drinking bubbler	318495

T&S Extra Heavy Duty Faucets **OUR BEST**

Top quality faucets.

Description	Model #
splash mounted	306134
splash mounted, wrist handles	313305

Spouts/Spout Assemblies

Description	Model #
splash mounted replacement gooseneck	312162
for 120V AC electronic or pedal-operated models	

Faucet-Mount Emergency Eye Wash Unit

Fits in place of standard aerator on spout. Comes with two dust covers. Polished chrome finish.

IMPORTANT: If anti-scald valve (page 10) is needed, order #373848 only.

Description	Model #
pull valve activates fountain	326272

Shut-Off Valve

Antibacterial surface. NSF-approved. Screws onto faucet aerator. Polished chrome finish.

Description	Model #
shut-off push bar	349921

Battery-Powered Electronic-Eye Faucet

Offered as a replacement faucet for sinks on page 5.

Description	Model #
Splash mount. Comes with 6-volt battery and built-in low-battery indicator	326014
Upgrade: T&S electronic-eye faucet, splash-mtd with battery and AC adapter for dual operation. With AC adapter plugged in, faucet automatically switches to AC power to conserve battery.	356128

© 2010 Eagle Group. Although every attempt has been made to ensure the accuracy of the data in this publication, we cannot be responsible for printing or typographical errors or omissions.



Quality

Value

Reliability

**Profit from the
Eagle Advantage[®]**

Corporate Headquarters

- 100 Industrial Boulevard
Clayton, DE 19938-8903
- Phone: (302) 653-3000

Foodservice/SpecFAB[®] Divisions

- Phone: (800) 441-8440
- Fax: (302) 653-2065

Material Handling Division

- Phone: (800) 637-5100
- Fax: (302) 653-2065

www.eaglegrp.com



Rev 04/10 EG7006